

BICKERTON ROAD, LONDON, N19

Charming 1,000 sq ft work place is available in Dartmouth Park Hill within a short walk to Archway and Tufnell Park tube stations.

£3,950 pcm Office to rent

INACTIVE

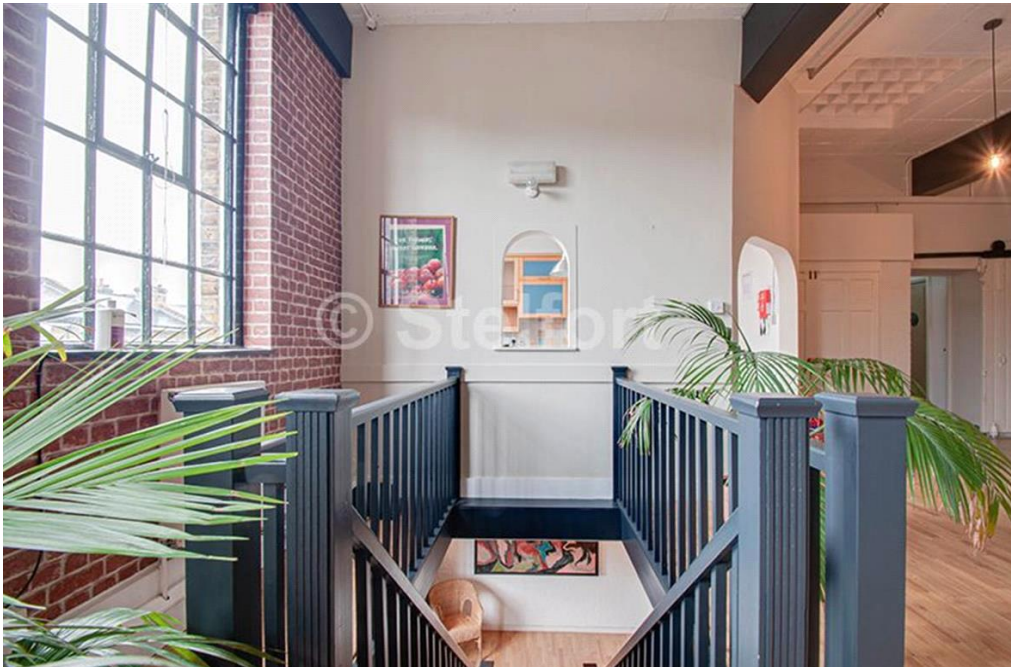


STELFORT



This stunning 1,000 sq ft (100 sq m) office unit has its own private entrance from the street providing access to a lobby / waiting area. The main space an excellent natural daylight and high ceilings. The office has its own fully-fitted kitchen and bathroom, separate private office / meeting room and benefits from a dedicated gas central heating system.

- Free Usage of Beautiful Roof Terrace
- Meeting Room
- NO Buildings Insurance
- NO Service Charges
- Tea and Coffee Room
- Workshop
- Inclusive Maintenance & Cleaning
- 24h access & CCTV Security





Viewing by appointment only

Stelfort Ltd

117 Junction Road, London N19 5PX

Tel: 02072633555 Email: info@stelfort.co.uk Website: www.stelfort.co.uk

Whilst every effort is made to ensure the accuracy of these details, it should be noted that the measurements are approximate only. Floorplans are for representation purposes only and prepared according to the RICS Code of Measuring Practice by our floorplan provider. Therefore, the layout of doors, windows and rooms are approximate and should be regarded as such by any prospective tenant.